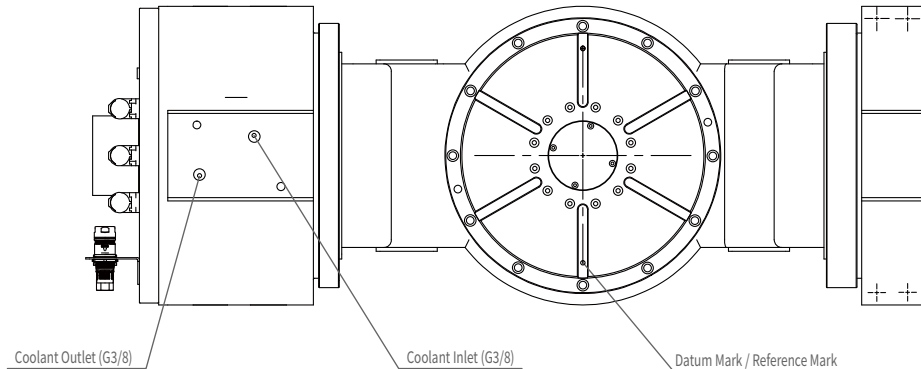
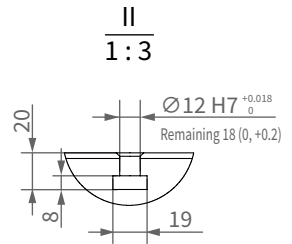
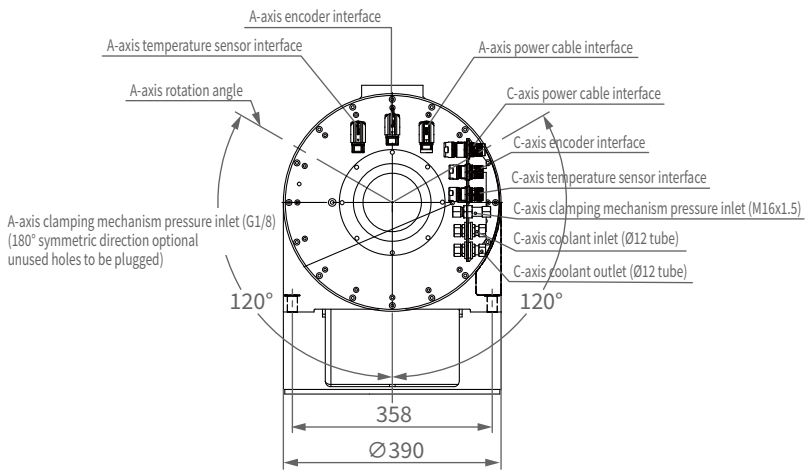
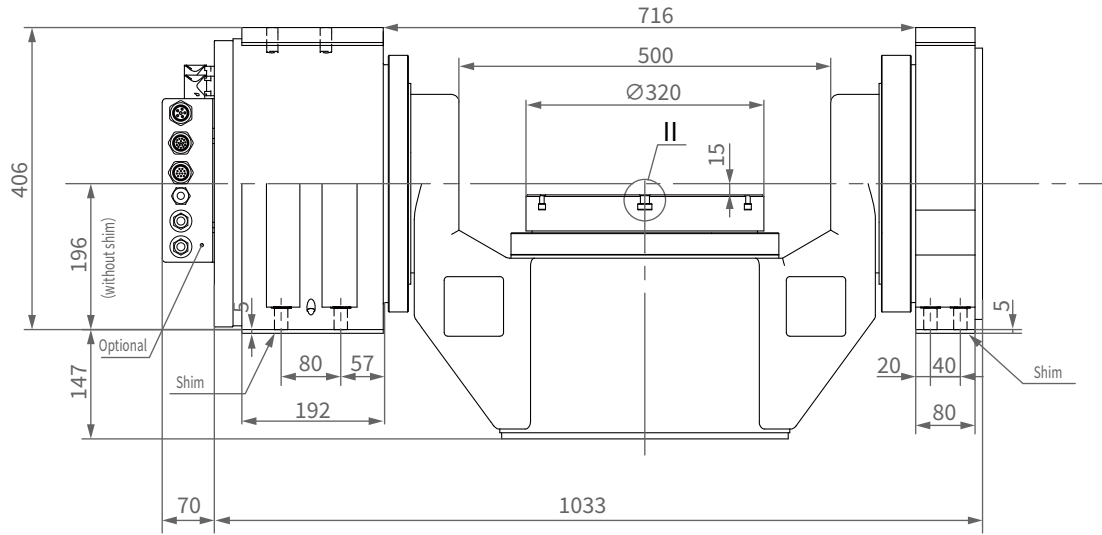




## Direct-Drive 5-Axis Cradle Rotary Table Selection Manual

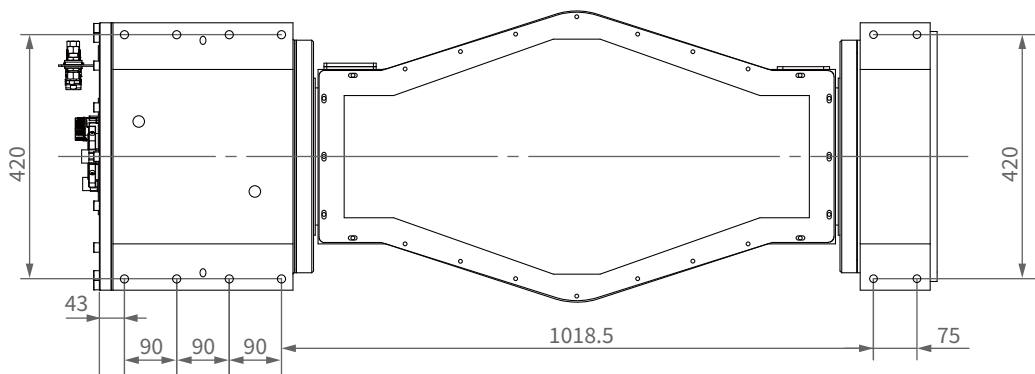
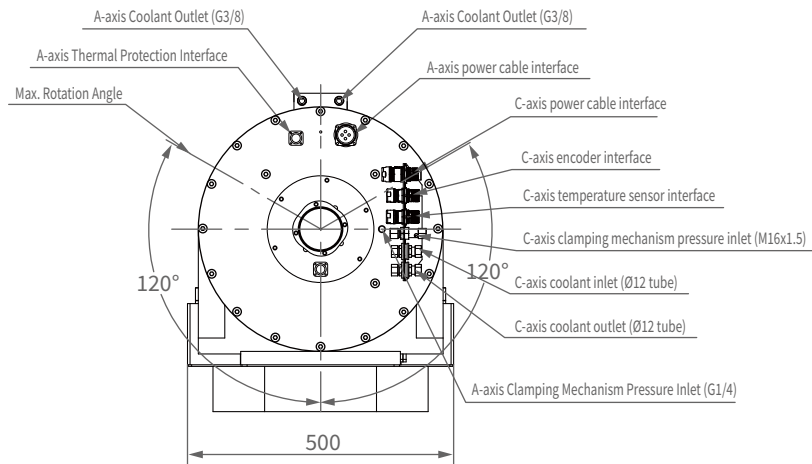
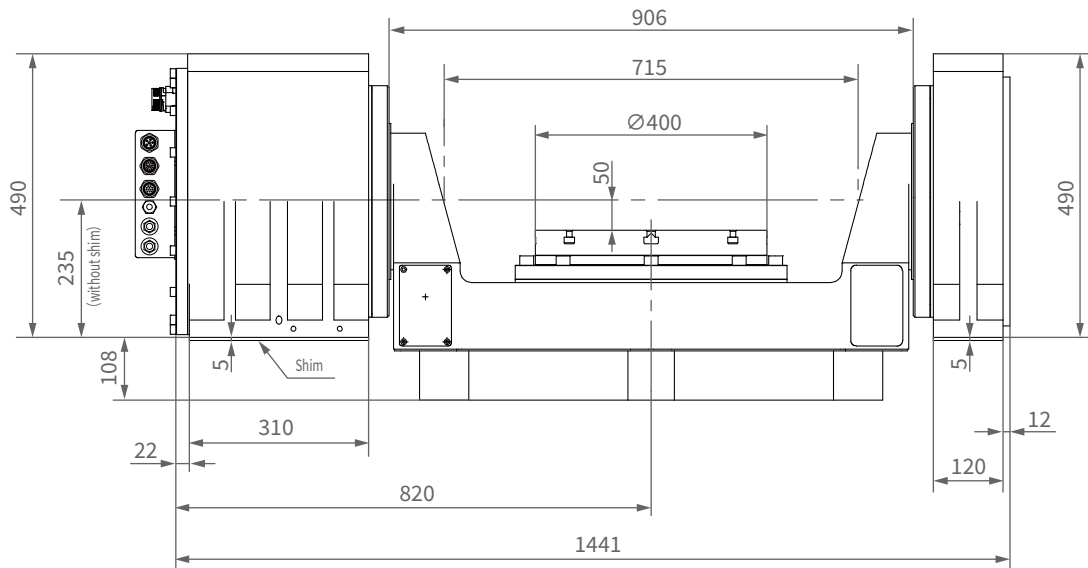


# MODEL: BCET-AC320D-4560T-4172T-80/100



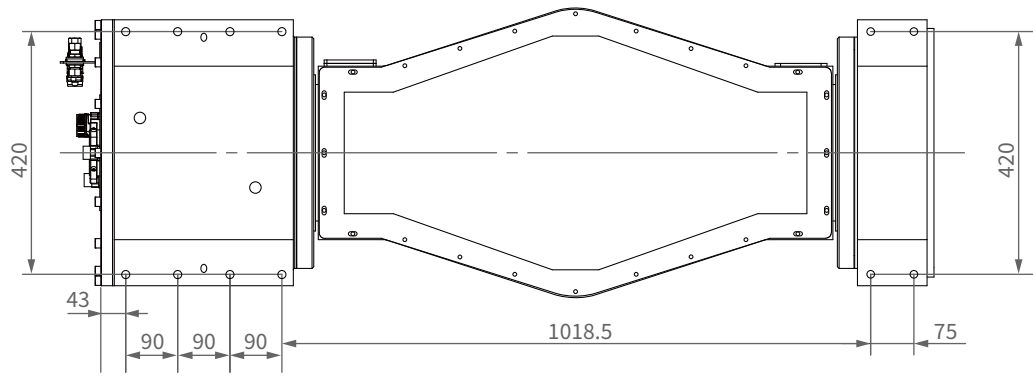
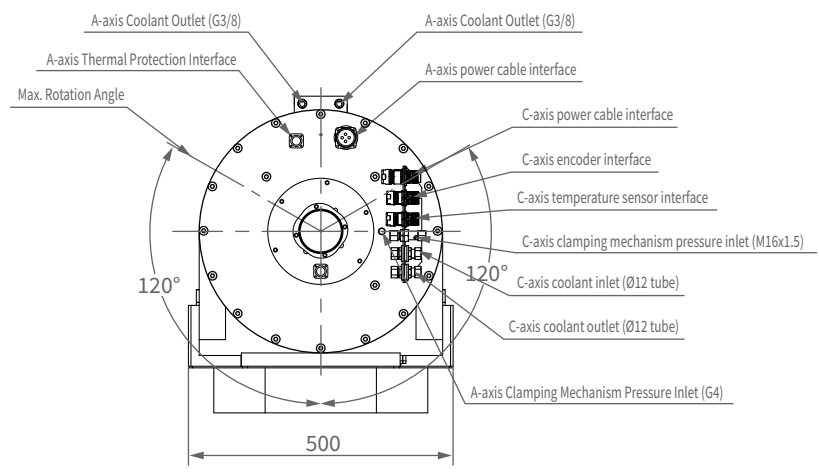
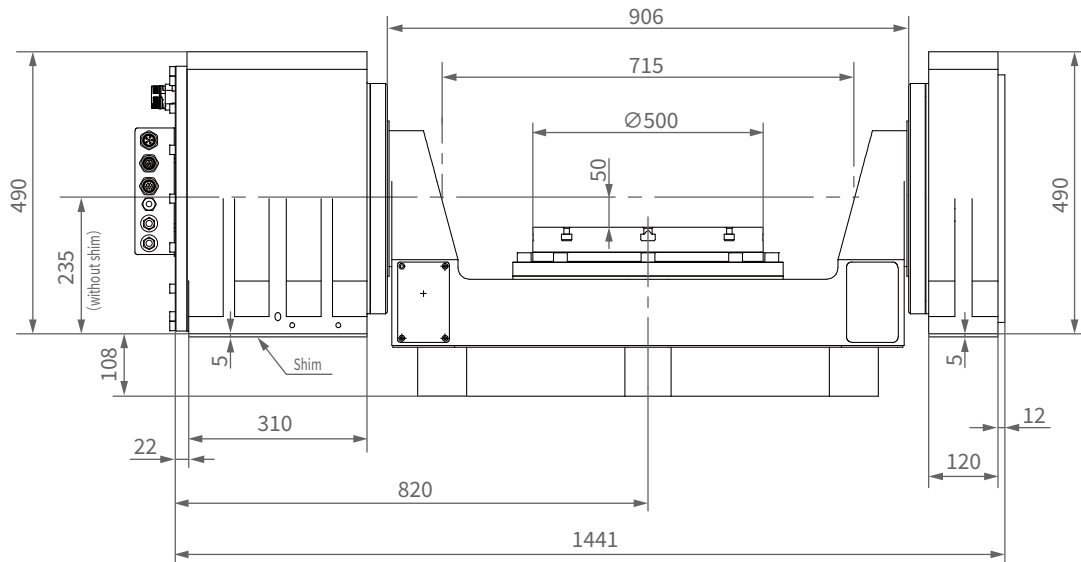
No.	Item	Unit	Value	
1	Rotary Table Model	-	A Axis	C Axis
2	Table Diameter	mm	-	320
3	Through-Hole Diameter	mm	70	-
4	Rated Power	Kw	4.7	1.8
5	Rated Voltage	V	309	352
6	Rated Current	A	17	5.9
7	Peak Current	A	29	10.3
8	Rated Torque	N.m	560	172
9	Peak Torque	N.m	780	300
10	Rated Speed	rpm	80	100
11	Max. Speed	rpm	100	130
12	Rated Frequency	Hz	32	33.3
13	Max. Frequency	Hz	40	43.2
14	Phase Resistance (20° C)	Ω	2.966	12.49
15	D-Axis Inductance	mH	29.12	80.77
16	Q-Axis Inductance	mH	31.62	83.73
17	Poles	-	48	40
18	Torque Constant	N.m/A	32.9	29.2
19	Voltage Constant	V/Krpm	2300	1850
20	Rotational Inertia	Kg*m <sup>2</sup>	8.43	0.31
21	Load Capacity	Kg	100kg	
22	Table Face Runout	mm	0.012	
23	Table Radial Runout	mm	0.012	
24	Encoder Brand	-	Heidenhain / Guoce Time Grating	
25	Encoder Model	-	RCN2310 / RAE170	RCN2310 / RAD090
26	Encoder Protocol	-	Endat2.2 / BISS-C	
27	Positioning Accuracy	"	±5	
28	Repeatability Accuracy	"	±2.5	
29	Clamping Method	-	Hydraulic 5Mpa	
30	Clamping Torque	N.m	1000	400
31	Rotation Angle	°	±120	360 (Continuous forward/reverse rotation)
32	Motor Cooling	-	Water cooling / Oil cooling	
33	Protection Class	-	IP54	
34	Cable Outlet Method	-	M23 Connector	
35	Temperature Protection Sensor	-	KTY84-130 / MK1-125-ES (Three-phase series)	
36	Weight	Kg	518	

# MODEL: BCET-AC400D-41200T-4560T-80/80-RAE



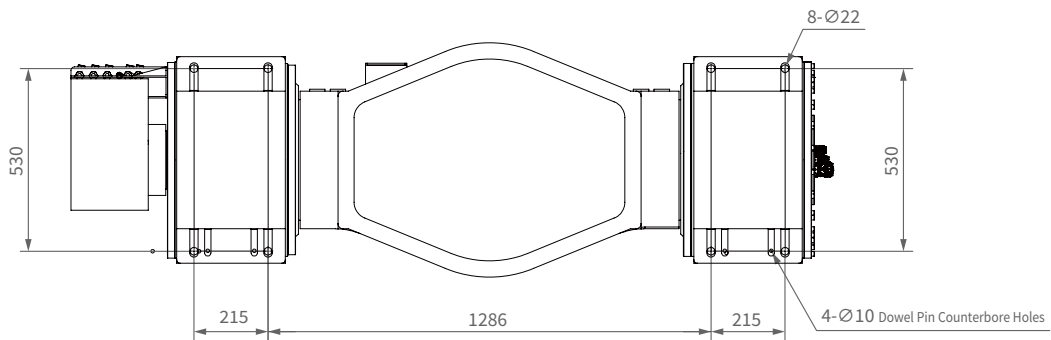
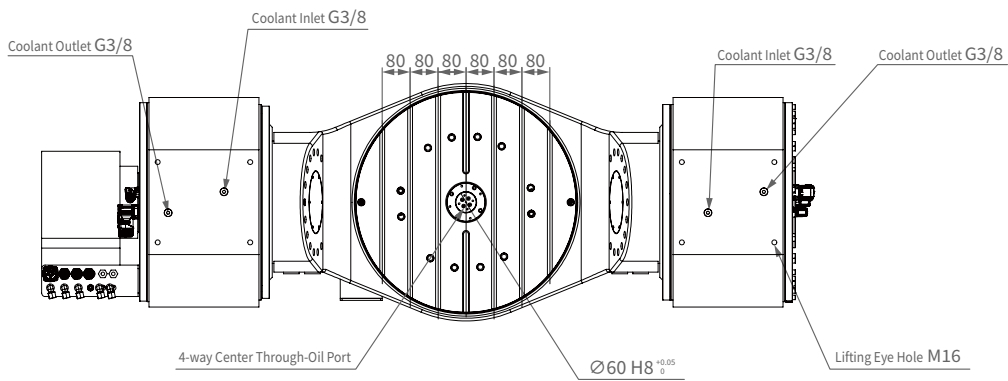
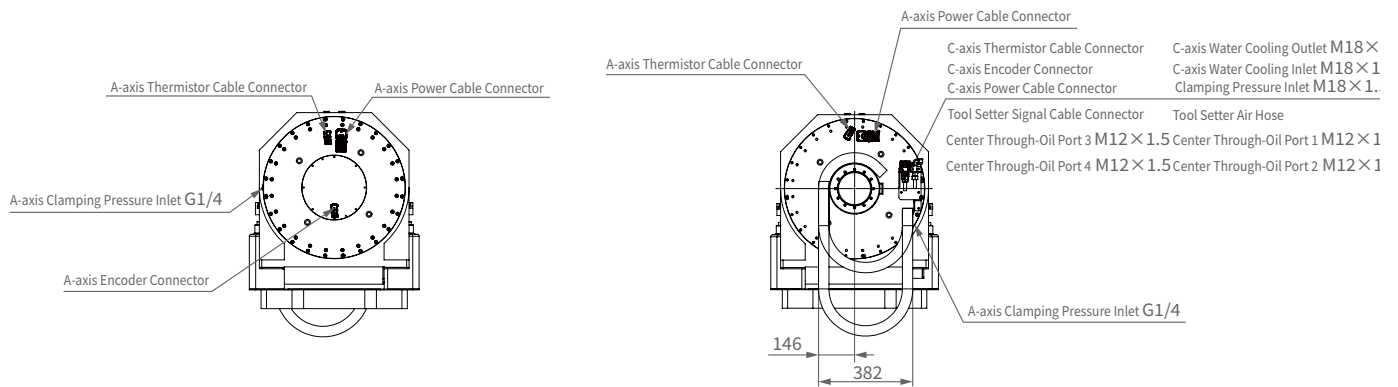
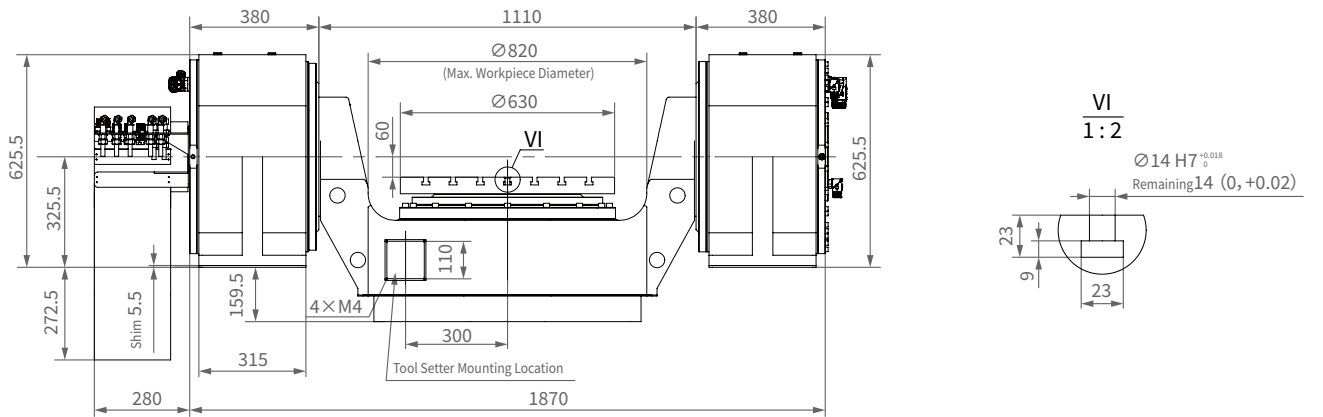
No.	Item	Unit	Value	
1	Rotary Table Model	-	A Axis	C Axis
2	Table Diameter	mm	-	400
3	Through-Hole Diameter	mm	75	-
4	Rated Power	Kw	10	4.7
5	Rated Voltage	V	284	309
6	Rated Current	A	31	17
7	Peak Current	A	58	29
8	Rated Torque	N.m	1200	560
9	Peak Torque	N.m	2000	780
10	Rated Speed	rpm	80	80
11	Max. Speed	rpm	100	100
12	Rated Frequency	Hz	42.67	32
13	Max. Frequency	Hz	53.3	40
14	Phase Resistance (20° C)	Ω	1.136	2.966
15	D-Axis Inductance	mH	7.758	29.12
16	Q-Axis Inductance	mH	8.997	31.62
17	Poles	-	64	48
18	Torque Constant	N.m/A	38.7	32.9
19	Voltage Constant	V/Krpm	2512	2300
20	Rotational Inertia	Kg*m <sup>2</sup>	24.62	0.897
21	Load Capacity	Kg	280kg	
22	Table Face Runout	mm	0.012	
23	Table Radial Runout	mm	0.012	
24	Encoder Brand	-	Heidenhain / Guoce Time Grating	
25	Encoder Model	-	RCN2310 / RAE180	
26	Encoder Protocol	-	Endat2.2 / BISS-C	
27	Positioning Accuracy	"	±5	
28	Repeatability Accuracy	"	±2.5	
29	Clamping Method	-	Hydraulic 5Mpa	
30	Clamping Torque	N.m	2000	800
31	Rotation Angle	°	±120	360 (Continuous forward/reverse rotation)
32	Motor Cooling	-	Water cooling	
33	Protection Class	-	IP54	
34	Cable Outlet Method	-	M23、M40 Connector	
35	Temperature Protection Sensor	-	KTY84-130 / MK1-125-ES (Three-phase series)	
36	Weight	Kg	760	

# MODEL: BCET-AC500D-41200T-4560T-80/80



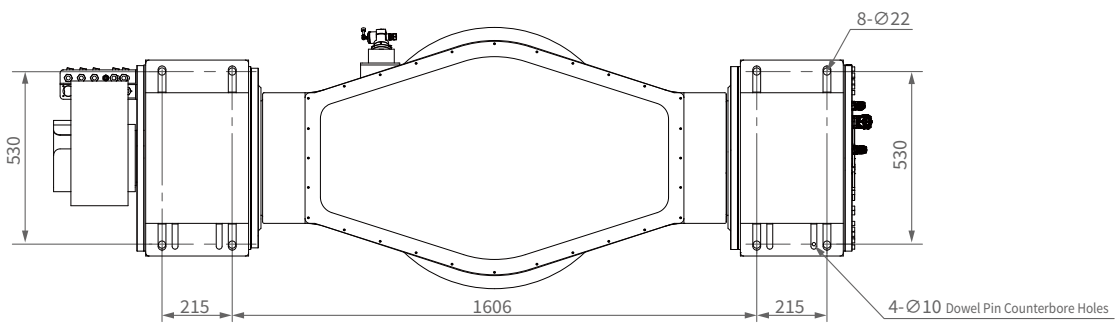
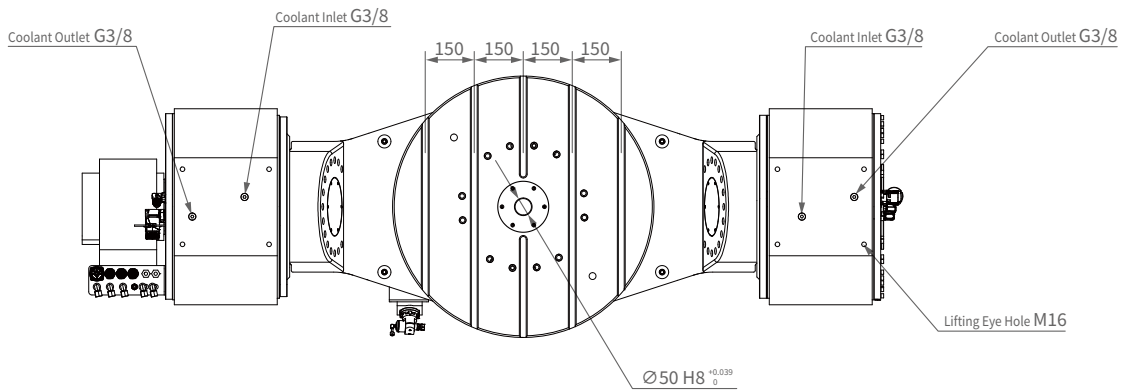
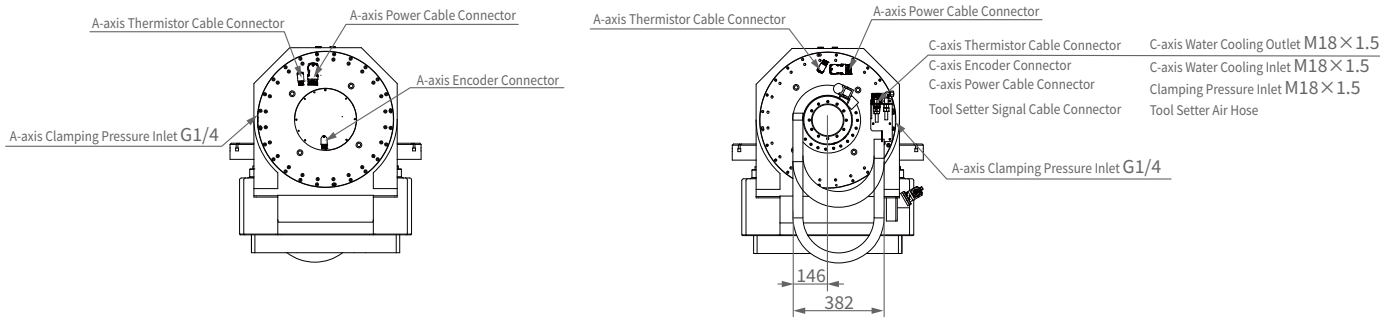
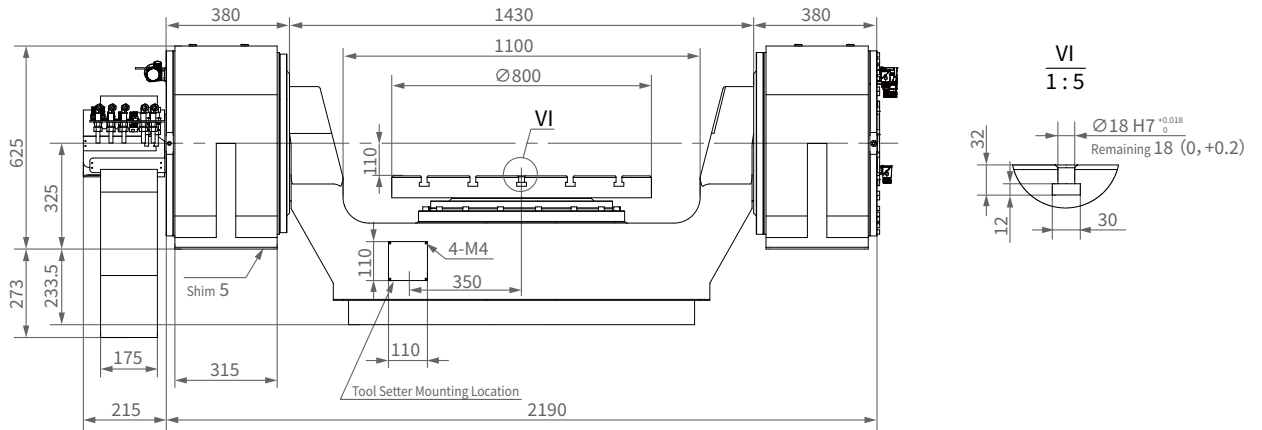
No.	Item	Unit	Value	
1	Rotary Table Model	-	A Axis	C Axis
2	Table Diameter	mm	-	500
3	Through-Hole Diameter	mm	75	-
4	Rated Power	Kw	10	4.7
5	Rated Voltage	V	284	309
6	Rated Current	A	31	17
7	Peak Current	A	58	29
8	Rated Torque	N.m	1200	560
9	Peak Torque	N.m	2000	780
10	Rated Speed	rpm	80	80
11	Max. Speed	rpm	100	100
12	Rated Frequency	Hz	42.68	32
13	Max. Frequency	Hz	53.3	40
14	Phase Resistance (20° C)	Ω	1.136	2.966
15	D-Axis Inductance	mH	7.758	29.12
16	Q-Axis Inductance	mH	8.997	31.62
17	Poles	-	64	48
18	Torque Constant	N.m/A	38.7	32.9
19	Voltage Constant	V/Krpm	2512	2300
20	Rotational Inertia	Kg*m <sup>2</sup>	25.72	2
21	Load Capacity	Kg	280kg	
22	Table Face Runout	mm	0.012	
23	Table Radial Runout	mm	0.012	
24	Encoder Brand	-	Heidenhain / Guoce Time Grating	
25	Encoder Model	-	RCN2310 / RAE180	
26	Encoder Protocol	-	Endat2.2 / BISS-C	
27	Positioning Accuracy	"	±5	
28	Repeatability Accuracy	"	±2.5	
29	Clamping Method	-	Hydraulic 5Mpa	
30	Clamping Torque	N.m	2000	800
31	Rotation Angle	°	±120	360 (Continuous forward/reverse rotation)
32	Motor Cooling	-	Water cooling	
33	Protection Class	-	IP54	
34	Cable Outlet Method	-	M23、M40 Connector	
35	Temperature Protection Sensor	-	KTY84-130 / MK1-125-ES (Three-phase series)	
36	Weight	Kg	760kg	

# MODEL: BCET-AC630-41300T-41400T-80/50-RCN



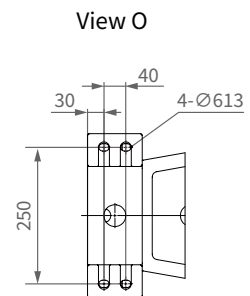
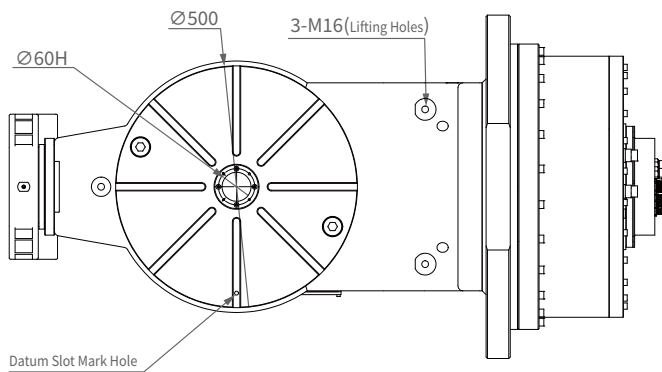
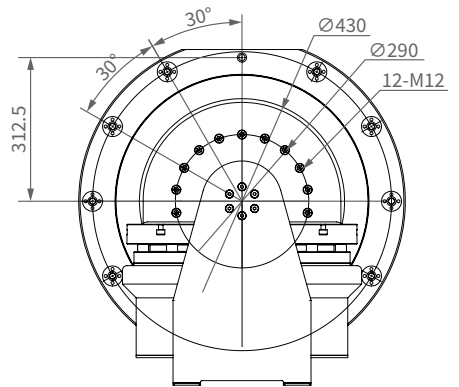
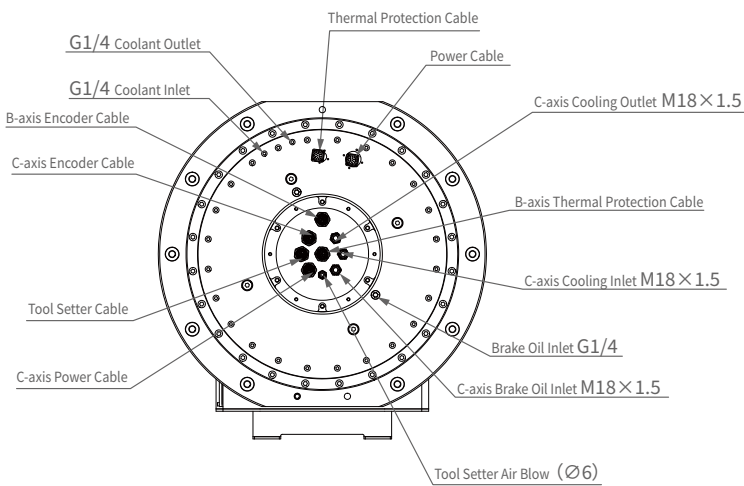
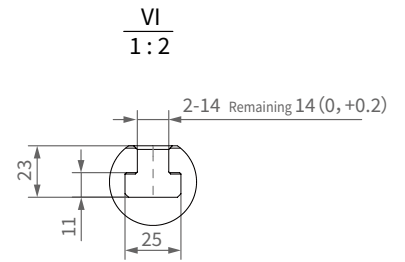
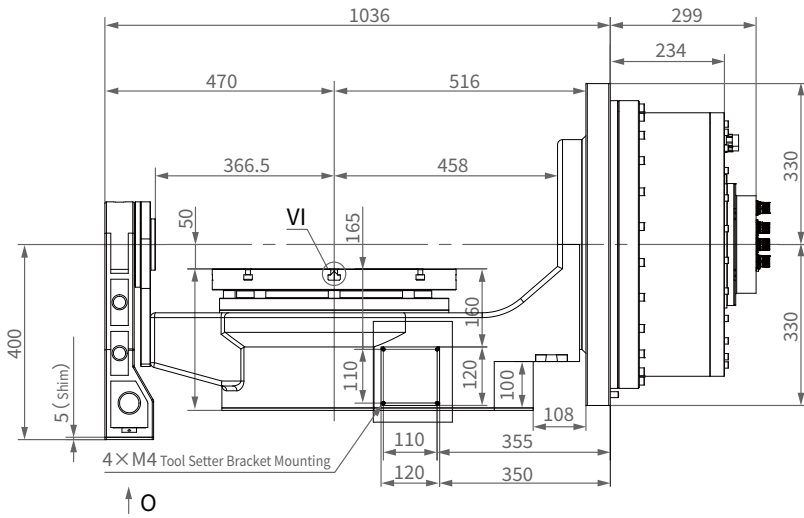
No.	Item	Unit	Value	
1	Rotary Table Model	-	A Axis	C Axis
2	Table Diameter	mm	-	630
3	Through-Hole Diameter	mm	100	-
4	Rated Power	Kw	7×2	11.7
5	Rated Voltage	V	295	284
6	Rated Current	A	19×2	40
7	Peak Current	A	38×2	95
8	Rated Torque	N.m	1300×2	1400
9	Peak Torque	N.m	2514×2	2490
10	Rated Speed	rpm	50	80
11	Max. Speed	rpm	80	120
12	Rated Frequency	Hz	31.67	50.67
13	Max. Frequency	Hz	50.67	76
14	Phase Resistance (20° C)	Ω	1.34÷2	0.74
15	D-Axis Inductance	mH	15.64÷2	6.29
16	Q-Axis Inductance	mH	18.23÷2	7.82
17	Poles	-	76	76
18	Torque Constant	N.m/A	70.36	35.57
19	Voltage Constant	V/Krpm	4660	2462
20	Rotational Inertia	Kg·m <sup>2</sup>	125	9.63
21	Load Capacity	Kg	850kg	
22	Table Face Runout	mm	0.012	
23	Table Radial Runout	mm	0.012	
24	Encoder Brand	-	Heidenhain / Guoce Time Grating	
25	Encoder Model	-	RCN2310 / RAE180	
26	Encoder Protocol	-	Endat2.2 / BISS-C	
27	Positioning Accuracy	"	±5	
28	Repeatability Accuracy	"	±2.5	
29	Clamping Method	-	Hydraulic 5Mpa	
30	Clamping Torque	N.m	4000×2	4000
31	Rotation Angle	°	±120	360 (Continuous forward/reverse rotation)
32	Motor Cooling	-	Water cooling	
33	Protection Class	-	IP54	
34	Cable Outlet Method	-	M23、M40 Connector	
35	Temperature Protection Sensor	-	KTY84-130 / MK1-125-ES (Three-phase series)	
36	Weight	Kg	2885kg	

# MODEL: BCET-AC800-41700T-42110T-50/50



No.	Item	Unit	Value	
1	Rotary Table Model	-	A Axis	C Axis
2	Table Diameter	mm	-	800
3	Through-Hole Diameter	mm	100	-
4	Rated Power	Kw	11×2	8.9
5	Rated Voltage	V	270	282
6	Rated Current	A	43×2	36.5
7	Peak Current	A	95×2	70
8	Rated Torque	N.m	2110×2	1700
9	Peak Torque	N.m	3500×2	2500
10	Rated Speed	rpm	50	50
11	Max. Speed	rpm	80	80
12	Rated Frequency	Hz	31.67	31.67
13	Max. Frequency	Hz	50.67	50.67
14	Phase Resistance (20° C)	Ω	0.9192÷2	1.248
15	D-Axis Inductance	mH	8.552÷2	11.24
16	Q-Axis Inductance	mH	10.71÷2	14.07
17	Poles	-	76	76
18	Torque Constant	N.m/A	49	46.6
19	Voltage Constant	V/Krpm	3440	3400
20	Rotational Inertia	Kg·m <sup>2</sup>	191	51
21	Load Capacity	Kg	1000kg	
22	Table Face Runout	mm	0.012	
23	Table Radial Runout	mm	0.012	
24	Encoder Brand	-	Heidenhain / Guoce Time Grating	
25	Encoder Model	-	RCN2311 / RAE208-6GB00	
26	Encoder Protocol	-	Endat2.2 / BISS-C	
27	Positioning Accuracy	"	±5	
28	Repeatability Accuracy	"	±2.5	
29	Clamping Method	-	Hydraulic 5Mpa	
30	Clamping Torque	N.m	4000×2	4000
31	Rotation Angle	°	±120	360 (Continuous forward/reverse rotation)
32	Motor Cooling	-	Water cooling	
33	Protection Class	-	IP54	
34	Cable Outlet Method	-	M23、M40 Connector	
35	Temperature Protection Sensor	-	KTY84-130 / MK1-125-ES (Three-phase series)	
36	Weight	Kg	2500kg	

# MODEL: BCET-BC500-41200T-4560T-70/80



No.	Item	Unit	Value	
1	Rotary Table Model	-	B Axis	C Axis
2	Table Diameter	mm	-	500
3	Through-Hole Diameter	mm	75	-
4	Rated Power	Kw	8.82	4.7
5	Rated Voltage	V	314	309
6	Rated Current	A	28.5	17
7	Peak Current	A	59	29
8	Rated Torque	N.m	1200	560
9	Peak Torque	N.m	1900(40RPM)	780
10	Rated Speed	rpm	70	80
11	Max. Speed	rpm	100	100
12	Rated Frequency	Hz	44.33	32
13	Max. Frequency	Hz	63.33	40
14	Phase Resistance (20° C)	Ω	1.376	2.966
15	D-Axis Inductance	mH	11.24	29.12
16	Q-Axis Inductance	mH	14.01	31.62
17	Poles	-	76	48
18	Torque Constant	N.m/A	42.1	32.9
19	Voltage Constant	V/Krpm	2942	2300
20	Rotational Inertia	Kg*m <sup>2</sup>	16.7	2
21	Load Capacity	Kg	300kg	
22	Table Face Runout	mm	0.01	
23	Table Radial Runout	mm	0.01	
24	Encoder Brand	-	Heidenhain / Guoce Time Grating	
25	Encoder Model	-	RCN2311 / RAE180-6GQ00	RCN2511 / RAE106-6GQ00
26	Encoder Protocol	-	DRIVE*CLIQ	
27	Positioning Accuracy	"	±5	
28	Repeatability Accuracy	"	±2.5	
29	Clamping Method	-	Hydraulic 5Mpa	
30	Clamping Torque	N.m	4000	800
31	Rotation Angle	°	±120	360 (Continuous forward/reverse rotation)
32	Motor Cooling	-	Water cooling	
33	Protection Class	-	IP54	
34	Cable Outlet Method	-	M23 Connector	
35	Temperature Protection Sensor	-	KTY84-130 及 MK1-125-ES (Three-phase series)	
36	Weight	Kg	958kg	



No.	Item	Unit	Value	
1	Rotary Table Model	-	B Axis	C Axis
2	Table Diameter	mm	-	630
3	Through-Hole Diameter	mm	75	-
4	Rated Power	Kw	8.82	8.9
5	Rated Voltage	V	314	282
6	Rated Current	A	28.5	36.5
7	Peak Current	A	59	70
8	Rated Torque	N.m	1200	1700
9	Peak Torque	N.m	1900(40RPM)	2500
10	Rated Speed	rpm	70	50
11	Max. Speed	rpm	100	80
12	Rated Frequency	Hz	44.33	36.67
13	Max. Frequency	Hz	63.33	58.67
14	Phase Resistance (20° C)	Ω	1.376	1.248
15	D-Axis Inductance	mH	11.24	11.24
16	Q-Axis Inductance	mH	14.01	14.07
17	Poles	-	76	76
18	Torque Constant	N.m/A	42.1	46.6
19	Voltage Constant	V/Krpm	2942	3400
20	Rotational Inertia	Kg*m <sup>2</sup>	46.5	6.3
21	Load Capacity	Kg	500kg	
22	Table Face Runout	mm	0.01	
23	Table Radial Runout	mm	0.01	
24	Encoder Brand	-	Heidenhain / Guoce Time Grating	
25	Encoder Model	-	RCN2311 / RAE180-6GQ00	RCN2511 / RAE106-6GQ00
26	Encoder Protocol	-	Endat2.2 / DRIVE-CLIQ / Biss-C	
27	Positioning Accuracy	"	±5	
28	Repeatability Accuracy	"	±2.5	
29	Clamping Method	-	Hydraulic 5Mpa	
30	Clamping Torque	N.m	4000	800
31	Rotation Angle	°	±120	360 (Continuous forward/reverse rotation)
32	Motor Cooling	-	Water cooling	
33	Protection Class	-	IP54	
34	Cable Outlet Method	-	M23、M40 Connector	
35	Temperature Protection Sensor	-	KTY84-130 及 MK1-125-ES (Three-phase series)	
36	Weight	Kg	958kg	

STRIVE FOR CONTINUAL SELF-RENEWAL KEEP PACE WITH THE WORLD



Professional manufacturer of mechatronics products



Address: No. 9, 6th Yunxi Road, Miyun Economic Development  
Zone, Beijing (101500)  
Tel: 010-69076533  
Fax: 010-69076577  
<http://www.ctb.com.cn>  
24 h national toll-free service line: 400-888-9055



WeChat



TikTok

Due to constant technological improvements, texts, drawings and technical data in the manual may be changed without prior notice.